

# Project Management International

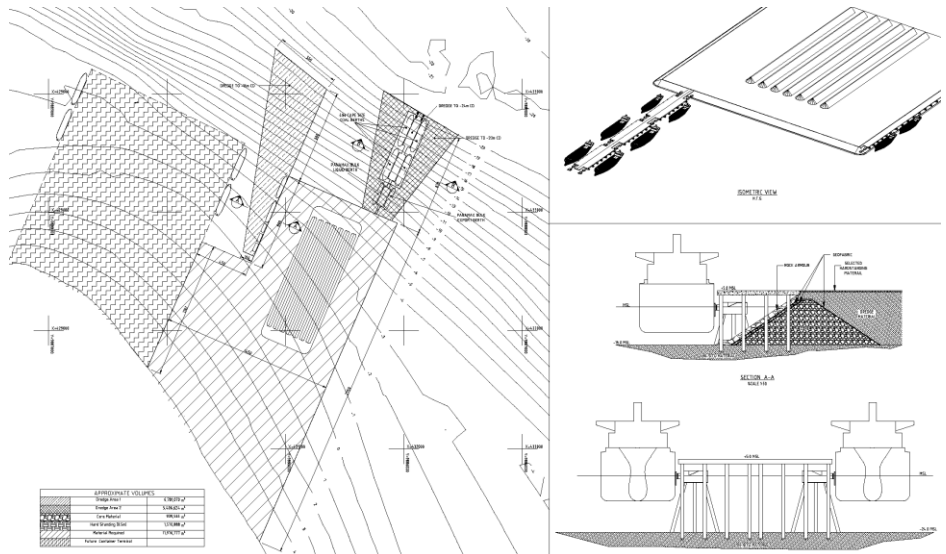
## Conceptual Study for a coal export facility in Sumatra

Client: TJ Shipping and Logistics  
 Location: Sumatra  
 Period: August to November 2007

### Conceptual Study for a coal export facility in Sumatra

The Employer, TJ Shipping and Logistics, have requested Project Management International Limited (PMI) to come up with a conceptual study for the development of a coal and export facility in Sumatra.

The intent of this study is to identify a number of possible feasible coal export facilities sites in Sumatra, and subsequently work out a conceptual layout on the preferred location.



Layout of Export Terminal

PMI executed a desktop study, with the following baseline parameters:

- Port to have an initial capacity to export 20 to 30 million tonnes/annum
- Port to have an ultimate capacity of 50 million tonnes/annum, three to five years after start-up
- Palm Oil Bulk Liquid Terminal to be included for product carriers
- Shipyard with slipway to construct barges of approximate 5000 dwt in size to be included in planning

- Topographic and Bathymetric features
- Wave climate
- Existing Infrastructure

The whole project was completed within the time frames set out. The project is expected to start its implementation in 2009.

Based on the results of the desktop study and subsequent site visit, the final location of the export terminal was identified.

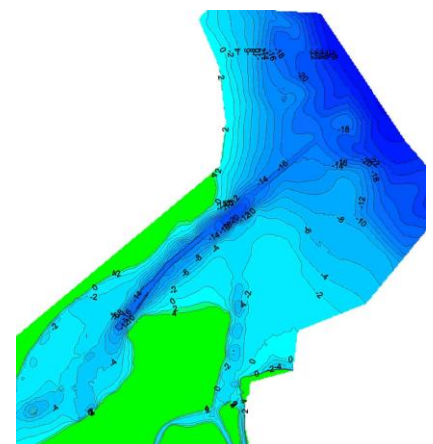
TJ Shipping subsequently requested PMI to perform a high level conceptual engineering, to derive the following information:

- Initial layout for the port infrastructure
- Requirements for material handling equipment and transport network
- Feasibility costing for the facility

### The Works

The following main criteria were considered for the identification of possible sites:

- Location of Coal Mining Concession area
- Geological features of the site and transport linkages



View Dredging requirements