

# PROJECT MANAGEMENT

# Project Management

*International*

## Definitive Scoping Study for a Bulk Trading Port Yangtze River, China

Client: Trafigura, Namibia  
Location: Yangtze River, China  
Period: April to July 2010

### Definitive Scoping Study for a Bulk Trading Port, Yangtze River, China

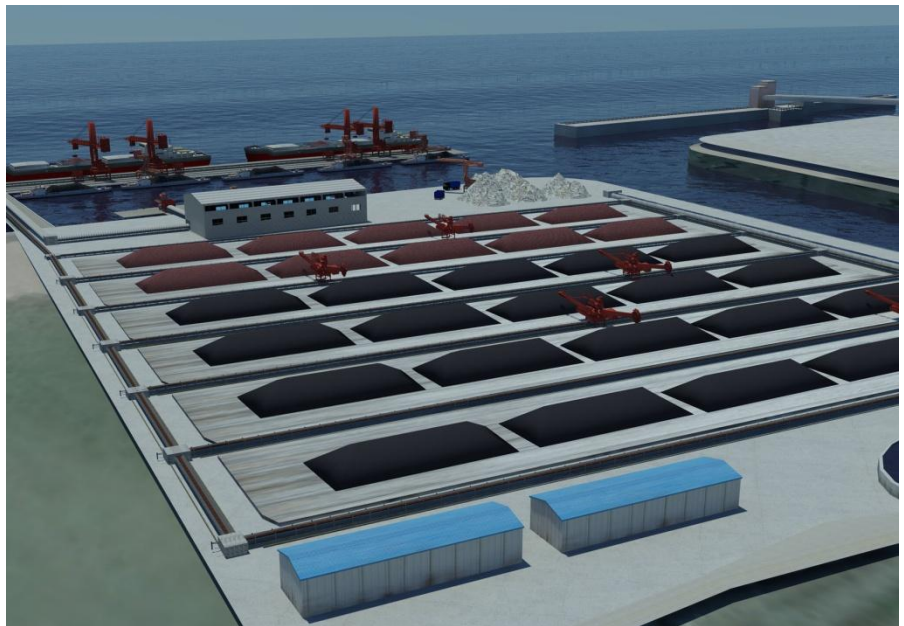
The Client, Trafigura, is planning to develop a bulk trading port in the Yangtze River, China with a target throughput of 18 MTPA.

Trafigura awarded the Definitive Scoping Study (DSS) contract to PMI in April 2010. PMI was tasked to develop and Project Manage the study in the limited time frame of 3 months.

### Scope of works

The DSS consisted of the following main items:

- Evaluate the feasibility of two river sites, namely Luan Island and Taicang
- Assemble and evaluate existing geotechnical site data
- Produce the basic marine engineering drawings and specifications
- Prepare the performance specifications and scope of works for the mechanical materials handling equipment
- Prepare the basic engineering design for associated Civil and Electrical works
- Simulate flow of commodities and verify material handling rates, storage areas, concept designs etc.



- Obtain and determine accurate CAPEX and OPEX estimates
- Setup and run the preliminary financial model
- Identify and recommend Chinese consultants to produce the detail engineering
- Provide Architectural and Graphic design services to assist with presentation.

### Study Methodology

PMI in cooperation with a team of consultants developed and executed the study methodology as follows:

Conceptual marine, mechanical, and civil engineering designs were executed from first principles.

This process included materials flow simulations to accurately determine commodity throughputs.

A visit to China was undertaken to obtain first-hand information about the sites, Chinese market costs, local resources, and operational aspects.

### Results

The DSS results were presented in a comprehensive report ahead of schedule and within budget. The results included:

- Engineering Results
- Financial Outputs
- Implementation & Risk Analysis

The next study phase is scheduled for September 2010.